

Aspire Permeable Paver System

Description:

The Aspire Permeable Paver System is perfect for urban development and infrastructure projects as it is designed to allow water to infiltrate through the surface and into the ground below. This offers numerous environmental and functional benefits compared to traditional impervious surfaces like asphalt or concrete.

Benefits:

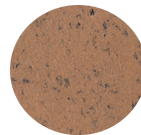
- **Stormwater Management...** reduces stormwater runoff by allowing rainwater to infiltrate into the ground, recharging groundwater and preventing flooding.
- **Water Quality Improvement...** filters contaminants and pollutants through underlying system layers
- **Erosion Control...** helps to control erosion by allowing water to infiltrator rather than flow over the surface
- **Heat Island Mitigation...** absorbs less heat than traditional asphalt

Uses:

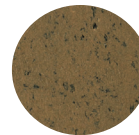
- Pathways
- Driveways
- Parking Lot
- Courtyards



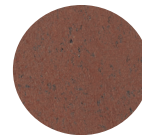
Classic Series Color Collection



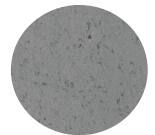
Boardwalk



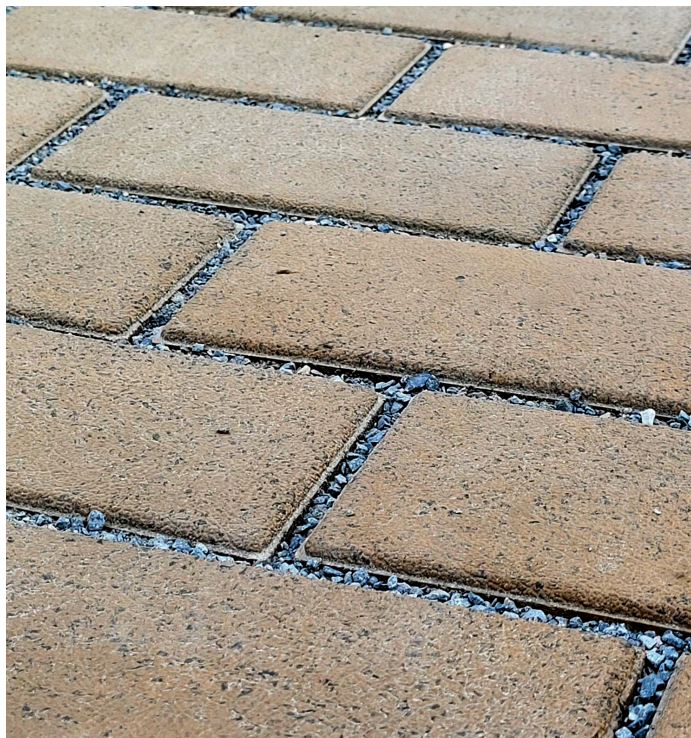
Olive



Redwood



Waterwheel



Permeable Pavers Specifications



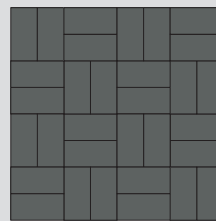
Paver Sizes(s)	4"x8"
Grid Size	16"x16"
Combined Height	2.4"
Weight (per unit)	16.6 lbs. (9.3 lbs./sq. ft.)
Square Feet (per unit)	1.78 sq. ft.
Accessories	Full Soldier Wedge Soldier
Pallet Sizes	
Quantity	126 units (approx. 224 sq. ft.)
Weight	Approx. 2,160 lbs.

Specification	Test Method	Result
Fire Classification	ASTM E108-007	Class A
2" Hail Impact	UL-2218	Class 4
Compression Strength	ASTM C140-09 Section 7	3521 PSI
Flexural Modulus	ASTM C140-09	3842 PSI
Water Absorption	ASTM C67 Section 8	4.10%
Freeze-Thaw	ASTM C67 Section 9	Pass: No sign of cracking or disintegration
Freeze-Thaw Cycling	ASTM C67	Pass
Specific Gravity	FSBP Test Method	0.9
Coefficient of Friction with Pull Monitor	ASTM C1028-07	Wet: 0.47 Dry: 0.83
Chemical Resistance	ASTM F925	No Dulling, color change, or surface attack

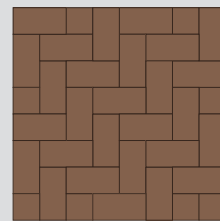
Specifications are subject to change without notice. For more information, please call Aspire at (844) 290-4196.

Patterns & Designs

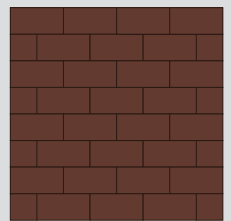
The patented grid system not only takes less time to install than traditional concrete pavers, it makes creating patterns and designs easier than ever. Choose from multiple colors, and a variety of patterns for a form and function that best suits your project.



Basketweave



Herringbone



Running Bond