



# Aspire

Interlocking Composite Paver System

# ROOFTOP PAVER SOLUTIONS

THE LIGHTWEIGHT, SUSTAINABLE ALTERNATIVE TO PEDESTAL SYSTEMS



# Creating Useful, Sustainable Spaces

## Creativity in Roofing

Business owners, architects and designers are constantly looking for creative ways to attract customers, employees and residents to new and existing properties. Interesting and appealing designs are paramount as well as utilization of space. Customers are looking for inviting spaces to get outside, find solitude, or a place to gather with friends and coworkers to escape the confines of an indoor setting.

## Adding Functionality To Rooftops

Utilization of rooftops are becoming increasingly popular, not only for their appealing setting and views, but also a better utilization of limited space.

## Making Boring Rooftops Lively

Gardens, seating areas, fireplaces, and water features create a pleasant parklike setting in the middle of a city or business complex. Hotels and business complexes can create additional revenue by utilizing rooftops for bars, restaurants, and events. Apartments and Condominiums can create a more attractive and valuable property to attract customers and earn more revenue.





## Challenges of Pedestal Systems



### Load-Bearing on Rooftops

Utilizing roof tops also has its challenges. The added weight of a rooftop deck system can put added stress on the building and require design changes to handle the extra load. A typical pedestal systems can add 20 lbs. or more per square foot and then you need to factor in the additional load when in use.

### Rooftop Paver Maintenance

Another concern is maintenance. Pedestal systems can require adjustments to the individual pedestals to keep level and avoid trip hazards. Some pavers are susceptible to chipping and cracking and may require replacement. They can also stain and often require regular sealer applications to help reduce staining issues.



### Roof Membranes Under Pavers

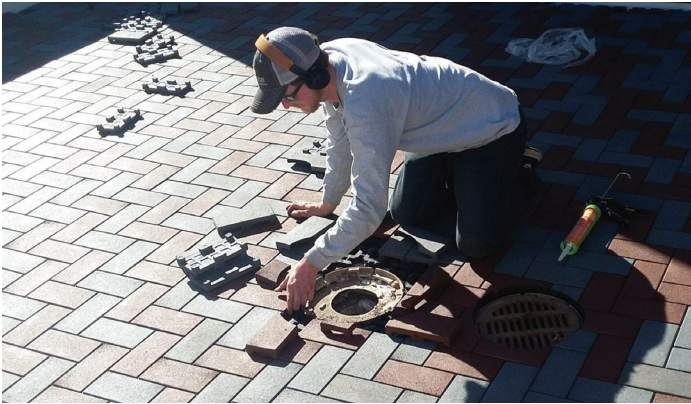
When the roof membrane below needs to be accessed for regular maintenance or to repair a leak, it can be difficult and time consuming for the maintenance crew to remove the system, perform repairs, then put the system back properly. A specialized crew may be required to remove and replace the system for the maintenance crew.



## Aspire to a Better, Sustainable Solution

There is an alternative solution to a pedestal system... the Aspire Paver System. Aspire is a Composite Paver System made from post-consumer recycled materials, primarily rubber tires and plastic containers. Not only does this make a sturdy and long-lasting product, for every 500 square feet of composite pavers, 250 tires and scrap plastic are diverted from the landfill. So not only are you getting a practical and useful product, you are helping to make a more sustainable planet. Plus, using a pavers system made from recycled materials can contribute to LEED points and help your project achieve a higher LEED certification.

# Why Aspire Pavers for Commercial Installations?



## Faster & Less Labor

The lightweight nature of Aspire Pavers makes them easier to handle and install. But the real key to system is the Patented Installation Grid. The grid takes all the guesswork and alignment time out of the install process. It is designed to both align the pavers and keep them in place. Each paver is placed quickly and easily saving up to three times the labor of a traditional paver system.



## Interlocking Method

The Grids themselves do not snap together. They simply are placed side-by-side. The key to the interlocking system is how the pavers straddle from one grid to another and "Interlock" the system together.



## Resists Cracking, Scratches, and Stains

Concrete and porcelain pavers are hard and can crack, chip, or break. Aspire Pavers are more durable and are practically impossible to break or chip. They are scratch resistant, eliminating scuffs from chairs or rooftop furniture. In addition, Aspire Pavers are non-porous, therefore resistant to staining.



## Low Maintenance

Not only are Aspire Pavers crack, scratch, and stain resistant, they do not require a sealer. Simply wash them off with a garden hose. For tougher stains use a mild cleaner and soft brush. Plus, they are easy for maintenance crews to remove and replace to repair leaks or access the roof for routine maintenance.



# Harsh Weather Conditions

## Wind Uplift

Unlike roof membranes, rooftop paver systems are not held to the strict testing requirements of roof membranes for wind uplift. They are considered an overburden just like just like ballast or a green roof.

## Tropical Conditions

Aspire Pavers have been in use on the rooftop of the Ballaja Barracks in Puerto Rico for over 8 years and have endured several hurricanes without any issues. This is partially due to the system weight of 6.7 lbs./sf. Another helpful design element is the individual spacing between pavers. Each paver is 4" x 8" and therefore has spacing between each paver which allows air to escape. In pedestal systems, a paver has space under the pavers, as well as a large surface area in which the air can get underneath the paver causing lift.

# Testing & Codes



## Class A Fire Rating

The Aspire Rooftop Paver System has a Class A Fire Rating and can be used over any Class A commercial roof membrane including EPDM, TPO, PVC, Asphaltic and Liquid-Applied.



## Compressive Strength

Aspire Pavers are tough. They have a compressive strength greater than 3,500 psi and are practically impossible to break.



## Hail Resistance

Hail has virtually no effect on Aspire Pavers. The Aspire Paver system passes the 2" Hail test with no issues.



## Slip Resistant

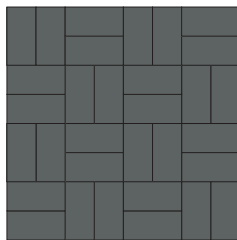
For any walking surface you want a good non-slip surface, especially on a rooftop. Aspire Pavers have an excellent wet and dry coefficient of friction that is much better than typical porcelain pavers.

# Endless Design Capabilities

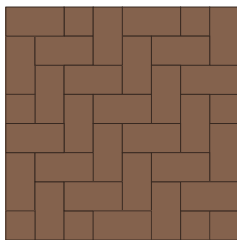
Aspire Pavers allow the building owner to create the look of their dreams. The easy to use grid was designed to host a variety of patterns including Basketweave, Herringbone and Running Band. The use of color further expands the layout opportunities. Patterns and color variations can easily be changed over time to add new life and fun to a rooftop.



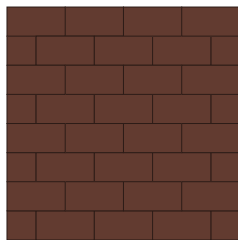
Elevate your rooftop quickly and easily with the Aspire Paver Grid and patterns.



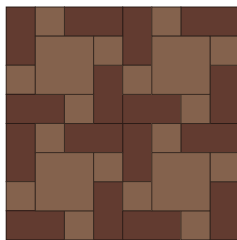
Basketweave



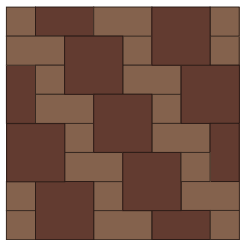
Herringbone



Running Bond

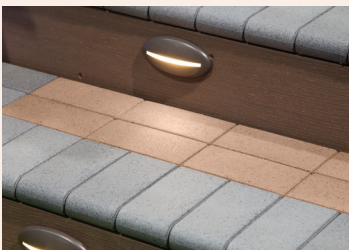


Pinwheel



Plainweave

## Finishing Touches



### Bullnose Border Pavers

The Bullnose Pavers are great for projects where you want to create an elegant border or design detail. These pavers have a radius edge making them perfect for perfect for balconies with a railing or on stair treads.



### Transition Border Pavers

The Transition Pavers are great for projects where you need to transition from one surface to another. These pavers have a gradual slope making them the perfect finishing touch.

# Colors and Styles

Aspire Pavers come in a variety of colors and styles making it easier than ever to transform your rooftop into a beautiful new space.

To design your own personal outdoor oasis, visit [AspirePavers.com](http://AspirePavers.com)

---

## Classic Series Color Collection



Boardwalk



Olive



Redwood



Waterwheel

## Designer Series Color Collection

### Earth Collection



Deep Sea



Monstera



Moss

### Stone Collection



Obsidian



Charcoal



Ivory

### Terra Cotta Collection



Burnt Umber



Red Rock



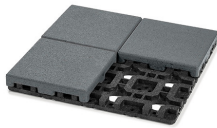
Beverly Hills

---

## Pavers & Accessories



16x16 Pavers on Grid



8x8 Pavers on Grid



4x8 Pavers on Grid



4x4 Pavers on Grid



Paver Grid



Bullnose Paver



Elongated Bullnose Paver with Legs



Bullnose Corner Paver



Transition Paver



Transition Corner Paver



Aspire Drain Sheet





# What Makes Aspire Such a Great Choice?

**Aspire by Brava Pavers are a simple way to transform your rooftop or balcony into a space for work and play.**

---

## **Sustainable**

Made from up to 95% recycled content, Aspire Pavers are not only designed to inspire, they are engineered to endure.

## **Durable**

Aspire Pavers resist stains and scratches and are much more comfortable to walk on. Complete with a lifetime limited warranty against cracking in pedestrian applications, your project is guaranteed to last beautifully.

## **Easy Installation**

Our patented interlocking design, light weight, and simple format makes Aspire pavers quick and easy to install.





Aspire

**Aspire by Brava**

915 E. Tyler Street, Washington, IA 52353

©2025 Brava Roof Tile 5/25

For more information please visit  
[aspirepavers.com](http://aspirepavers.com) or call 844-290-4196